

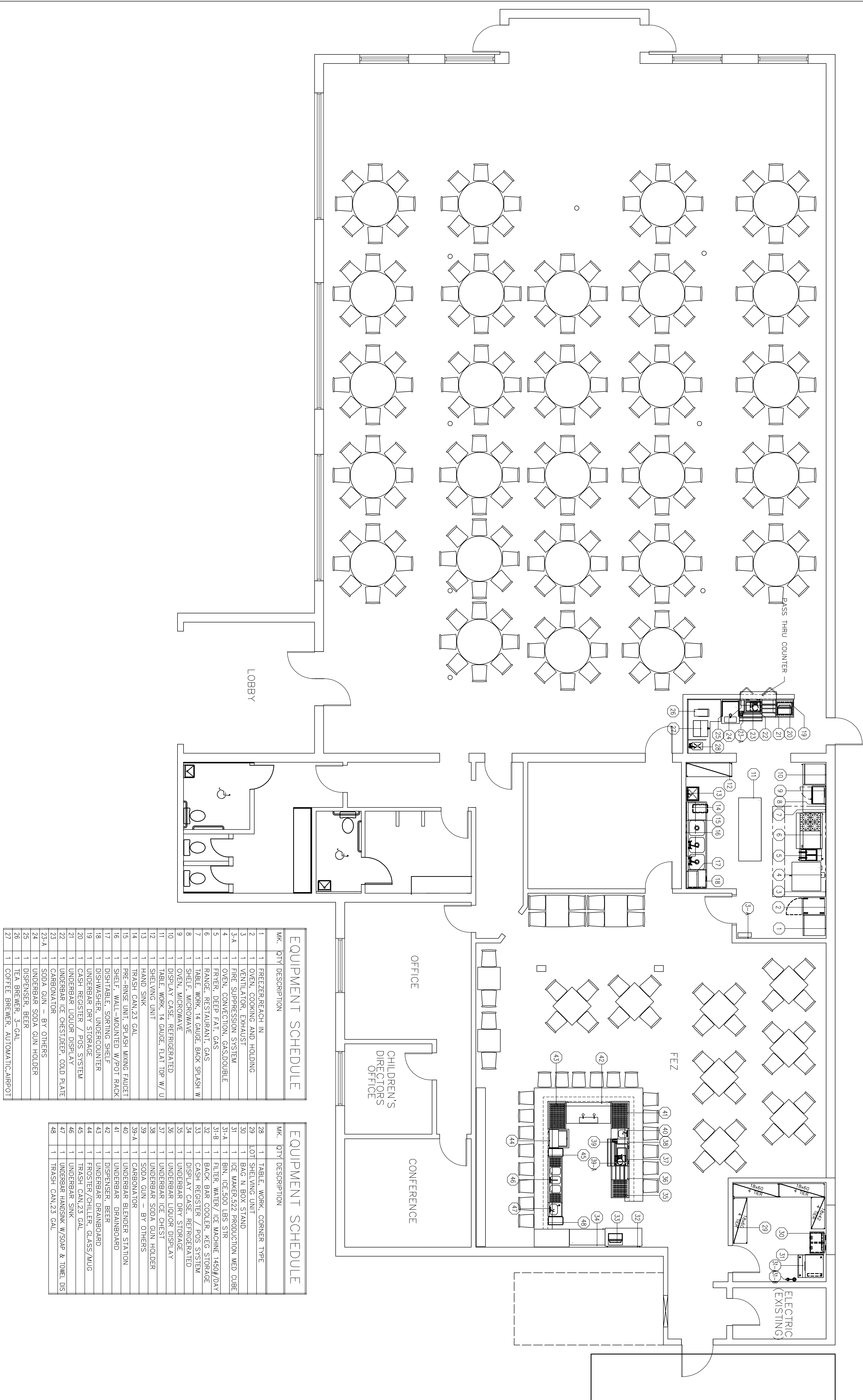
**NOTICE:**  
 ALL FOOD, SERVICE, MEASUREMENTS AND PLANT SPECIFICATIONS OR EQUIPMENT BY THIS DRAWING ARE BASED UPON THE ASSUMPTIONS OF MATHIAS FOODSERVICE ENGINEERING AND DESIGN. THE CLIENT SHALL BE RESPONSIBLE FOR VERIFYING THE ACCURACY OF ALL INFORMATION AND SPECIFICATIONS. MATHIAS FOODSERVICE ENGINEERING AND DESIGN SHALL NOT BE RESPONSIBLE FOR ANY ERRORS, OMISSIONS, OR CONFLICTS THAT MAY OCCUR. THE CLIENT SHALL BE RESPONSIBLE FOR OBTAINING ALL NECESSARY PERMITS AND APPROVALS FROM THE APPROPRIATE AGENCIES. THE CLIENT SHALL BE RESPONSIBLE FOR OBTAINING ALL NECESSARY INSURANCE COVERAGE. THE CLIENT SHALL BE RESPONSIBLE FOR OBTAINING ALL NECESSARY CONTRACTS AND AGREEMENTS FROM THE APPROPRIATE VENDORS. THE CLIENT SHALL BE RESPONSIBLE FOR OBTAINING ALL NECESSARY CONTRACTS AND AGREEMENTS FROM THE APPROPRIATE VENDORS. THE CLIENT SHALL BE RESPONSIBLE FOR OBTAINING ALL NECESSARY CONTRACTS AND AGREEMENTS FROM THE APPROPRIATE VENDORS.

REV. NO.	REVISIONS	REV. NO.	REVISIONS

SHRINE HALL – APOPKA

PROJECT: SHI22116  
 DRAWN BY: WJM/ps  
 SCALE: 1/4"=1'-0"

DATE: 12-29-2016  
 CHECKED BY:   
 SHEET TITLE: FOODSERVICE EQUIPMENT PLAN  
 SHEET NO: FS.1



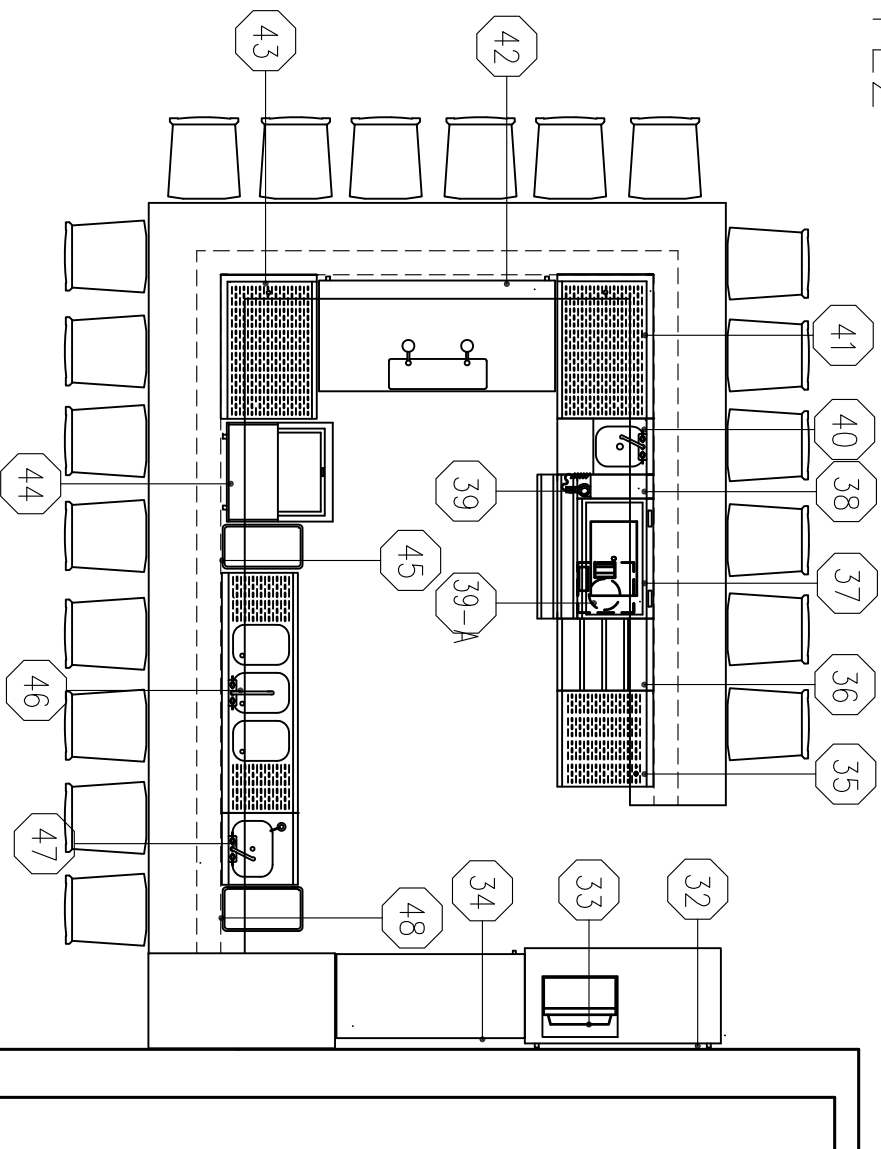
**EQUIPMENT SCHEDULE**

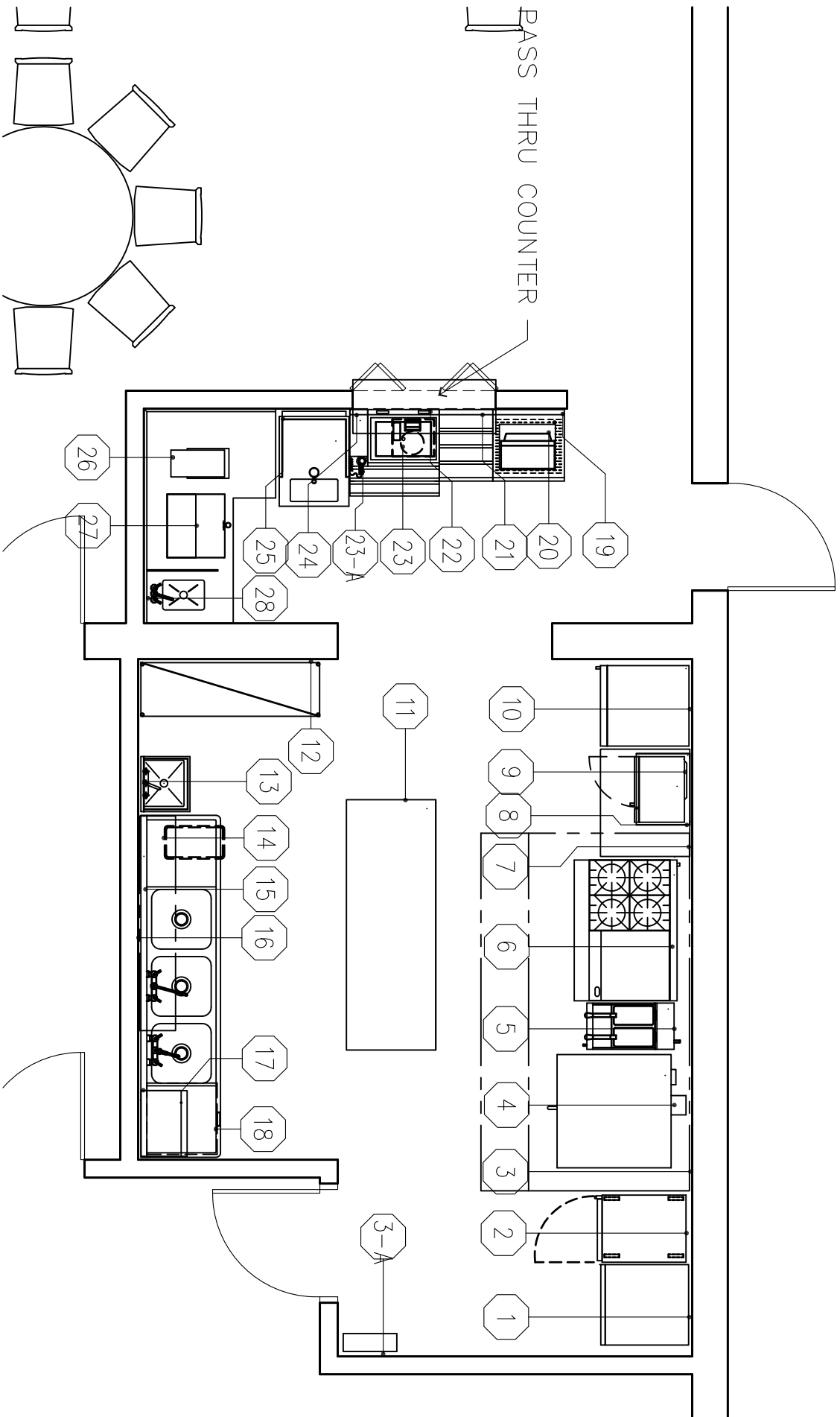
MK.	QTY	DESCRIPTION
1	1	FREEZER/REACH IN
2	1	OVEN, COOKING AND HOLDING
3	1	VENTILATOR, EXHAUST
3-A	1	FIRE SUPPRESSION SYSTEM
4	1	OVEN, CONVECTION, GAS/DOUBLE
5	1	FRYER, DEEP FAT, GAS
6	1	RANGE, RESTAURANT, GAS
7	1	TABLE, WORK, 14 GAUGE, BACK SPLASH W/ SHELF, MICROWAVE
8	1	OVEN, MICROWAVE
9	1	OVEN, MICROWAVE
10	1	DISPLAY CASE, REFRIGERATED
11	1	TABLE, WORK, 14 GAUGE, FLAT TOP W/ U SHELVING UNIT
12	1	SHELVING UNIT
13	1	HAND SINK
14	1	TRASH CAN, 23 GAL
15	1	PRE-RINSE UNIT, SPLASH MINGING FAUCET
16	1	SHELF, WALL-MOUNTED W/POT RACK
17	1	DISHTABLE, SORTING SHELF
18	1	DISHWASHER, UNDERCOUNTER
19	1	UNDERBAR DRY STORAGE
20	1	CASH REGISTER / POS SYSTEM
21	1	UNDERBAR LIQUOR DISPLAY
22	1	UNDERBAR ICE CHEST/DEEP, COLD PLATE
23	1	CARBONATOR
23-A	1	SODA GUN – BY OTHERS
24	1	UNDERBAR SODA GUN HOLDER
25	1	DISPENSER, BEER
26	1	TEA BREWER, 3-GAL
27	1	COFFEE BREWER, AUTOMATIC, AIRPOT
28	1	TABLE, WORK, CORNER TYPE
29	1	LOT SHELVING UNIT
30	1	BAG N BOX STAND
31	1	ICE MAKER, 522 PRODUCTION MED CUBE
31-A	1	BIN, ICE, 500 LBS. STR
31-B	1	FILTER, WATER/ ICE MACHINE 1450G/DAY
32	1	BACK BAR COOLER, KEG STORAGE
33	1	CASH REGISTER / POS SYSTEM
34	1	DISPLAY CASE, REFRIGERATED
35	1	UNDERBAR DRY STORAGE
36	1	UNDERBAR LIQUOR DISPLAY
37	1	UNDERBAR ICE CHEST
38	1	UNDERBAR SODA GUN HOLDER
39	1	SODA GUN – BY OTHERS
39-A	1	CARBONATOR
40	1	UNDERBAR BLENDER STATION
41	1	UNDERBAR DRAINBOARD
42	1	DISPENSER, BEER
43	1	UNDERBAR DRAINBOARD
44	1	FROSTER/CHILLER, GLASS/MUG
45	1	TRASH CAN, 23 GAL
46	1	UNDERBAR SINK
47	1	UNDERBAR HANDSINK W/ SOAP & TOWEL DIS
48	1	TRASH CAN, 23 GAL

**EQUIPMENT SCHEDULE**

MK.	QTY	DESCRIPTION
28	1	TABLE, WORK, CORNER TYPE
29	1	LOT SHELVING UNIT
30	1	BAG N BOX STAND
31	1	ICE MAKER, 522 PRODUCTION MED CUBE
31-A	1	BIN, ICE, 500 LBS. STR
31-B	1	FILTER, WATER/ ICE MACHINE 1450G/DAY
32	1	BACK BAR COOLER, KEG STORAGE
33	1	CASH REGISTER / POS SYSTEM
34	1	DISPLAY CASE, REFRIGERATED
35	1	UNDERBAR DRY STORAGE
36	1	UNDERBAR LIQUOR DISPLAY
37	1	UNDERBAR ICE CHEST
38	1	UNDERBAR SODA GUN HOLDER
39	1	SODA GUN – BY OTHERS
39-A	1	CARBONATOR
40	1	UNDERBAR BLENDER STATION
41	1	UNDERBAR DRAINBOARD
42	1	DISPENSER, BEER
43	1	UNDERBAR DRAINBOARD
44	1	FROSTER/CHILLER, GLASS/MUG
45	1	TRASH CAN, 23 GAL
46	1	UNDERBAR SINK
47	1	UNDERBAR HANDSINK W/ SOAP & TOWEL DIS
48	1	TRASH CAN, 23 GAL

FEZ





## EQUIPMENT SCHEDULE

MK.	QTY	DESCRIPTION
1	1	FREEZER, REACH IN
2	1	OVEN, COOKING AND HOLDING
3	1	VENTILATOR, EXHAUST
3-A	1	FIRE SUPPRESSION SYSTEM
4	1	OVEN, CONVECTION, GAS, DOUBLE
5	1	FRYER, DEEP FAT, GAS
6	1	RANGE, RESTAURANT, GAS
7	1	TABLE, WORK, 14 GAUGE, BACK SPLASH W
8	1	SHELF, MICROWAVE
9	1	OVEN, MICROWAVE
10	1	DISPLAY CASE, REFRIGERATED
11	1	TABLE, WORK, 14 GAUGE, FLAT TOP W/ U
12	1	SHELVING UNIT
13	1	HAND SINK
14	1	TRASH CAN, 23 GAL
15	1	PRE-RINSE UNIT, SPLASH MIXING FAUCET
16	1	SHELF, WALL-MOUNTED W/POT RACK
17	1	DISHTABLE, SORTING SHELF
18	1	DISHWASHER, UNDERCOUNTER
19	1	UNDERBAR DRY STORAGE
20	1	CASH REGISTER / POS SYSTEM
21	1	UNDERBAR LIQUOR DISPLAY
22	1	UNDERBAR ICE CHEST, DEEP, COLD PLATE
23	1	CARBONATOR
23-A	1	SODA GUN - BY OTHERS
24	1	UNDERBAR SODA GUN HOLDER
25	1	DISPENSER, BEER
26	1	TEA BREWER, 3-GAL
27	1	COFFEE BREWER, AUTOMATIC, AIRPOT

## EQUIPMENT SCHEDULE

MK.	QTY	DESCRIPTION
28	1	TABLE, WORK, CORNER TYPE
29	LOT	SHELVING UNIT
30	1	BAG N BOX STAND
31	1	ICE MAKER, 522 PRODUCTION MED CUBE
31-A	1	BIN, ICE, 500 LBS STR
31-B	1	FILTER, WATER/ ICE MACHINE 1450#/DAY
32	1	BACK BAR COOLER, KEG STORAGE
33	1	CASH REGISTER / POS SYSTEM
34	1	DISPLAY CASE, REFRIGERATED
35	1	UNDERBAR DRY STORAGE
36	1	UNDERBAR LIQUOR DISPLAY
37	1	UNDERBAR ICE CHEST
38	1	UNDERBAR SODA GUN HOLDER
39	1	SODA GUN - BY OTHERS
39-A	1	CARBONATOR
40	1	UNDERBAR BLENDER STATION
41	1	UNDERBAR DRAINBOARD
42	1	DISPENSER, BEER
43	1	UNDERBAR DRAINBOARD
44	1	FROSTER/CHILLER, GLASS/MUG
45	1	TRASH CAN, 23 GAL
46	1	UNDERBAR SINK
47	1	UNDERBAR HANDSINK W/SOAP & TOWEL DIS
48	1	TRASH CAN, 23 GAL